



**ISEBE LEMFUNDO LEMPUMA KOLONI
EASTERN CAPE EDUCATION DEPARTMENT
OOS-KAAP ONDERWYSDEPARTEMENT**

**NATIONAL SENIOR CERTIFICATE
NASIONALE SENIOR SERTIFIKAAT**

**GRADE 11
GRAAD 11**

**ENGINEERING GRAPHICS AND DESIGN P1
INGENIEURSGRAFIKA EN -ONTWERP V1**

**NOVEMBER 2019
MARKING GUIDELINE / NASIENRIGLYN**

MARKS / PUNTE: 200

TIME / TYD: 3 hours / uur

**This marking guideline consists of 7 pages.
Hierdie nasienriglyn bestaan uit 7 bladsye.**

Copyright reserved / Kopiereg voorbehou

QUESTION 1		
1	MM / Millimeter	1
2	Grey	6
	Yellow	
	Brown	
	Red	
	Black	
	Green	
3	1. Wall	6
	2. Screed	
	3. Concrete slab	
	4. Hardcore filling	
	5. Earth	
	6. Foundation	
4	Not to scale	1
5	54m	3
6	138,75m ²	4
7	Means going up	1
8	A cutting plane	1

VRAAG 1		
1	MM / Millimeter	1
2	Grys	6
	Geel	
	Bruin	
	Rooi	
	Swart	
	Groen	
3	1. Muur	6
	2. Gidspleister	
	3. Betonlaag	
	4. Verdigte vulling	
	5. Grond	
	6. Fondasie	
4	Nie volgens skaal	1
5	54m	3
6	138,75m ²	4
7	Beteken gaan op	1
8	'n Snyvlak	1

Question 5 / Vraag 5:
Calculations / Berekeninge:

$$(10 \times 2) + (2,5 \times 2) + (14,5 \times 2) = 54m$$

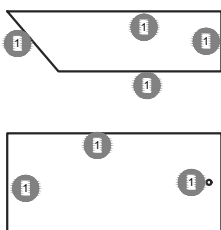
OR

$$10 + 5 + 2,5 + 2,5 + 2,5 + 7 + 10 + 14,5 = 54m$$

Question 6 / Vraag 6:
Calculations / Berekeninge:

$$(14,5 \times 10) - (2,5 \times 2,5) = 138,75m^2$$

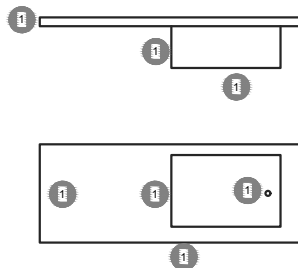
ANSWER 9.1 BATH
ANTWOORD 9.1 BAD



½ mark for freehand
½ punt vir vryhand

[4]

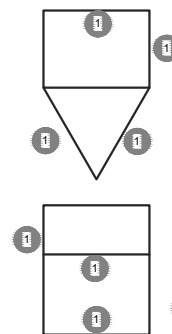
ANSWER 9.1 SINGLE SINK
ANTWOORD 9.1 ENKEL OPWASBAK



½ mark for freehand
½ punt vir vryhand

[4]

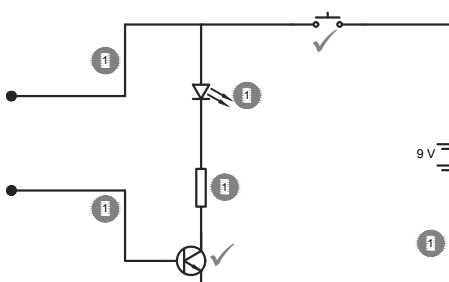
ANSWER 9.1 TOILET
ANTWOORD 9.1 TOILET



½ mark for freehand
½ punt vir vryhand

[4]

ANSWER 1B:

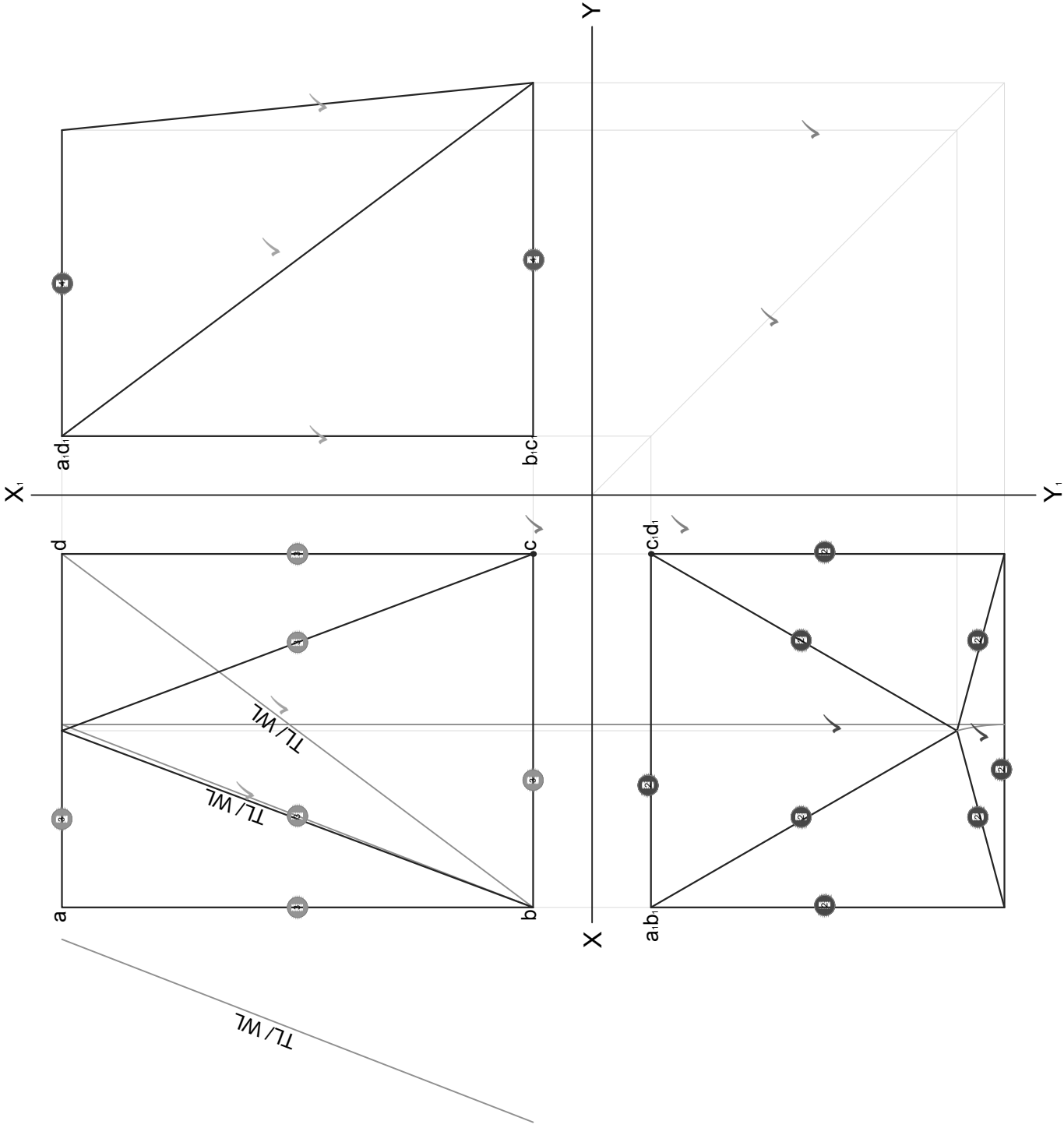


[6]

½ mark for freehand
½ punt vir vryhand

½ mark for symbol and ½ mark for 9V
½ punt vir simbool en ½ punt vir 9V

MARKS		PUNTE	
Q 1A	35	V 1A	35
Q 1B	6	V 1B	6
TOT	41	TOT	41

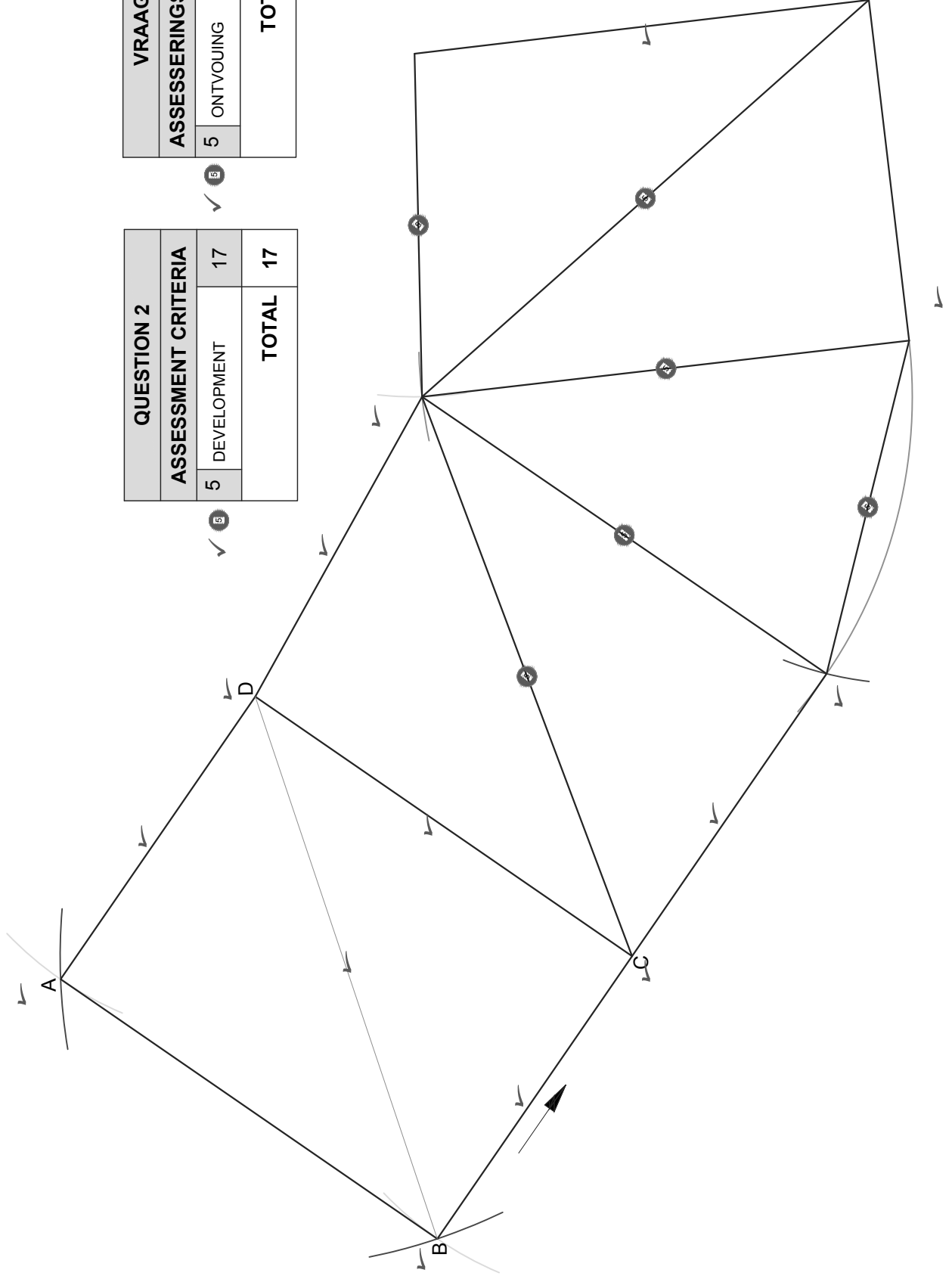


QUESTION 2		
ASSESSMENT CRITERIA		
1	CONSTRUCTIONS + PLACING	4
2	TOP VIEW	6
3	FRONT VIEW	5
4	LEFT VIEW	4
TOTAL		19

- ✓
- ✓
- ✓
- ✓

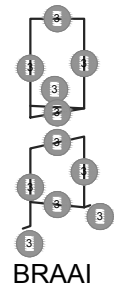
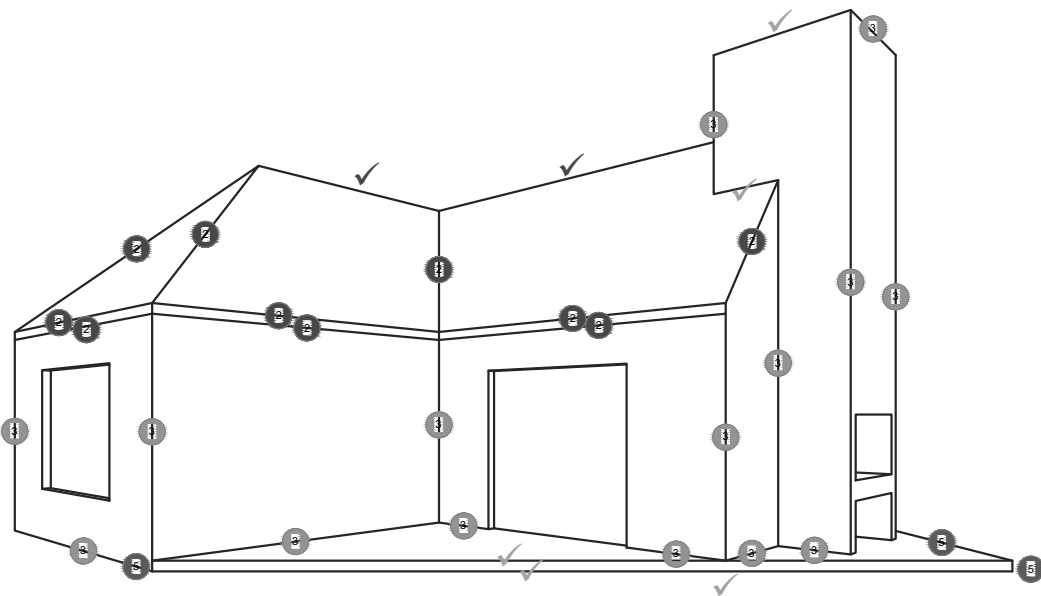
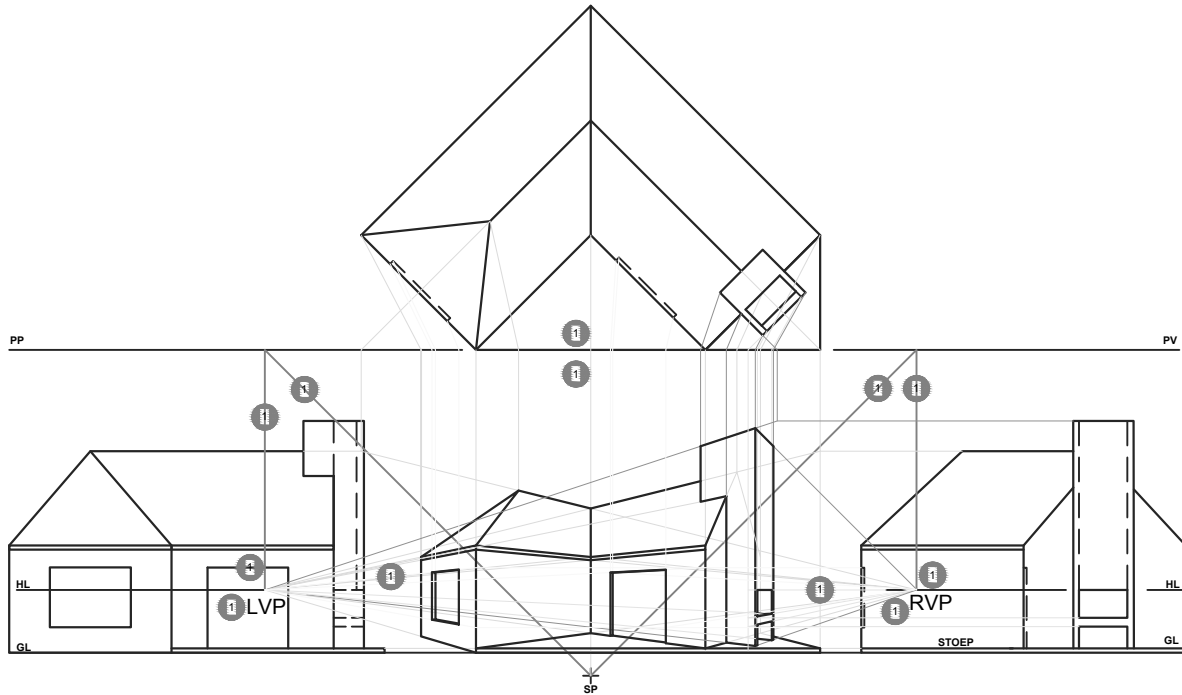
VRAAG 2		
ASSESSERINGSKRITERIA		
1	KONSTRUKSIE + PLASING	4
2	BO-AANSIG	6
3	VOORRAANSIG	5
4	LINKERAANSIG	4
TOTAAL		19

- ✓
- ✓
- ✓
- ✓

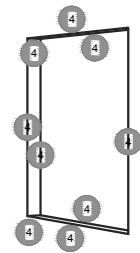


QUESTION 2	
ASSESSMENT CRITERIA	ASSESSINGSKRITERIA
5 DEVELOPMENT	5 ONTVOUJING
17	17
TOTAL	TOTAAL
17	17

VRAAG 2	
ASSESSMENT CRITERIA	ASSESSINGSKRITERIA
5 DEVELOPMENT	5 ONTVOUJING
17	17
TOTAL	TOTAAL
17	17



BRAAI

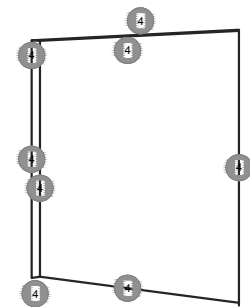


WINDOW / VENSTER

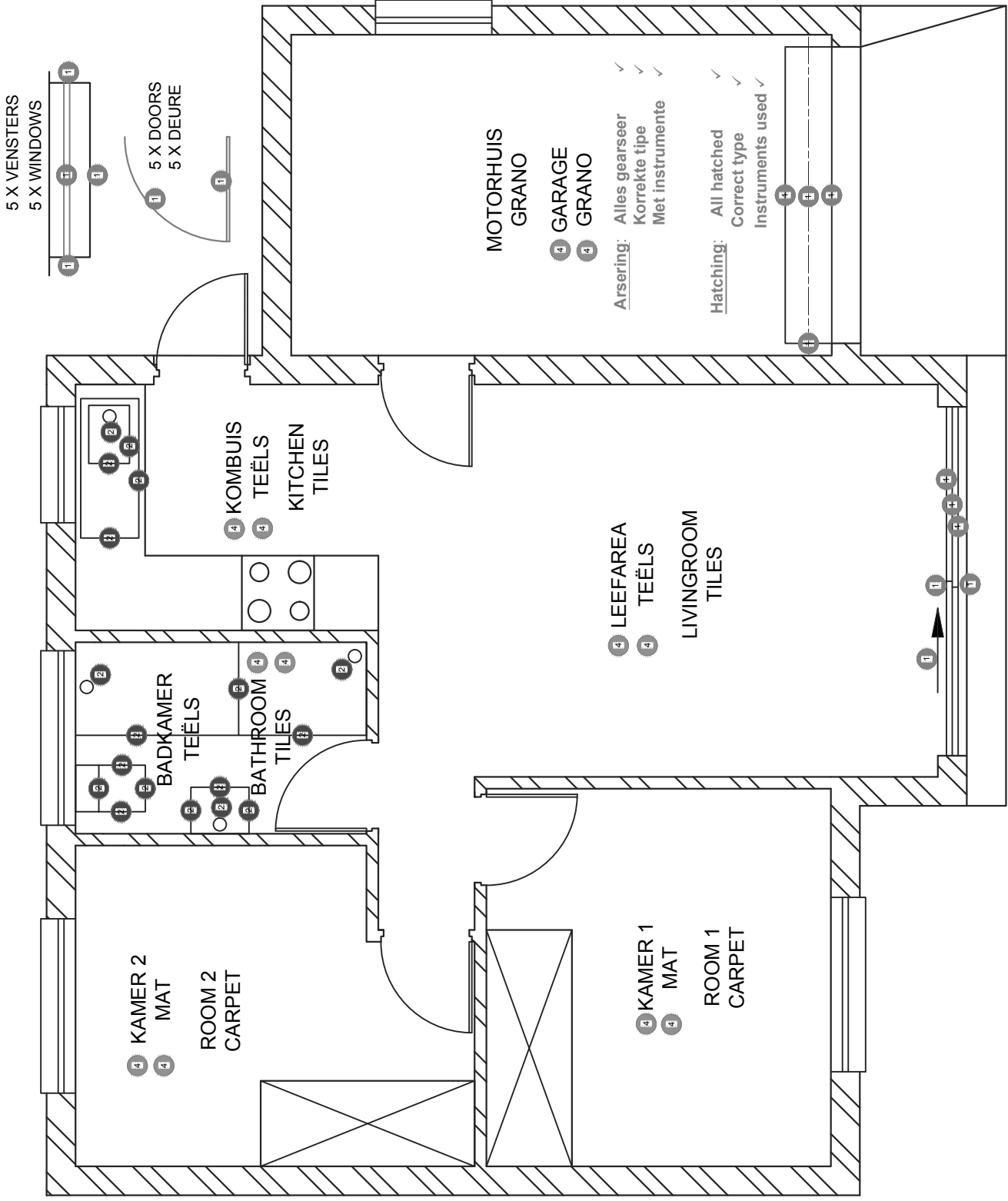
1 MARK FOR NO LINE /
1 PUNT VIR GEEN LYN

QUESTION 3		
ASSESSMENT CRITERIA		
1	1 CONSTRUCTION + VPs	6
✓ 2	2 ROOFS	7
✓ 3	3 WALLS+ BRAAI + CHIMNEY	15
4	4 WINDOW + DOOR	8½
✓ 5	5 PORCH	4½
TOTAL		41

VRAAG 3		
ASSESSERINGSKRITERIA		
1	1 KONSTRUKSIES + VP'ITE	6
✓ 2	2 DAK	7
✓ 3	3 MURE + BRAAI + SKOORSTEEN	15
4	4 VENSTER + DEUR	8½
✓ 5	5 STOEP	4½
TOTAAL		41

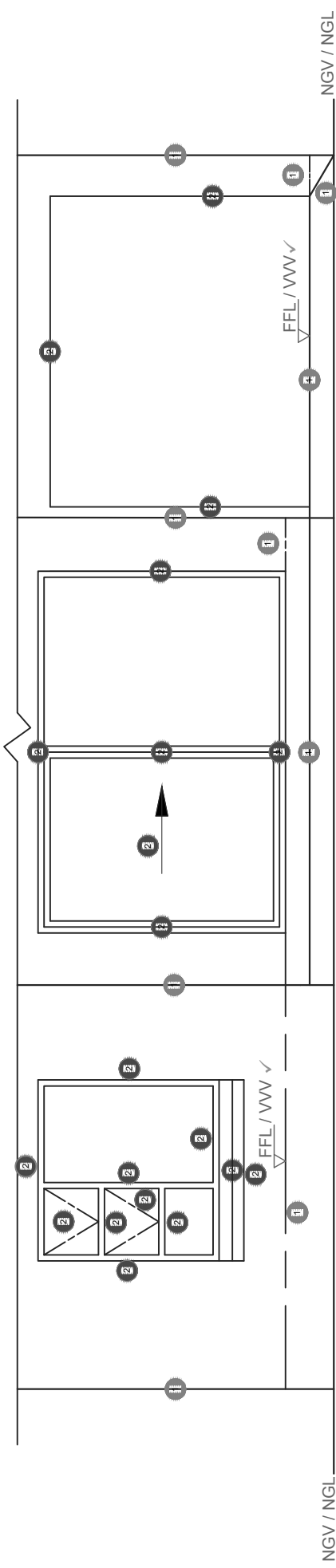


DOOR / DEUR



QUESTION 4	
ASSESSMENT CRITERIA	
FLOOR PLAN	
1	DOORS + WINDOWS 20
2	FIXTURES 9
3	HATCHING 3
4	LABELS 6
SUBTOTAL 38	

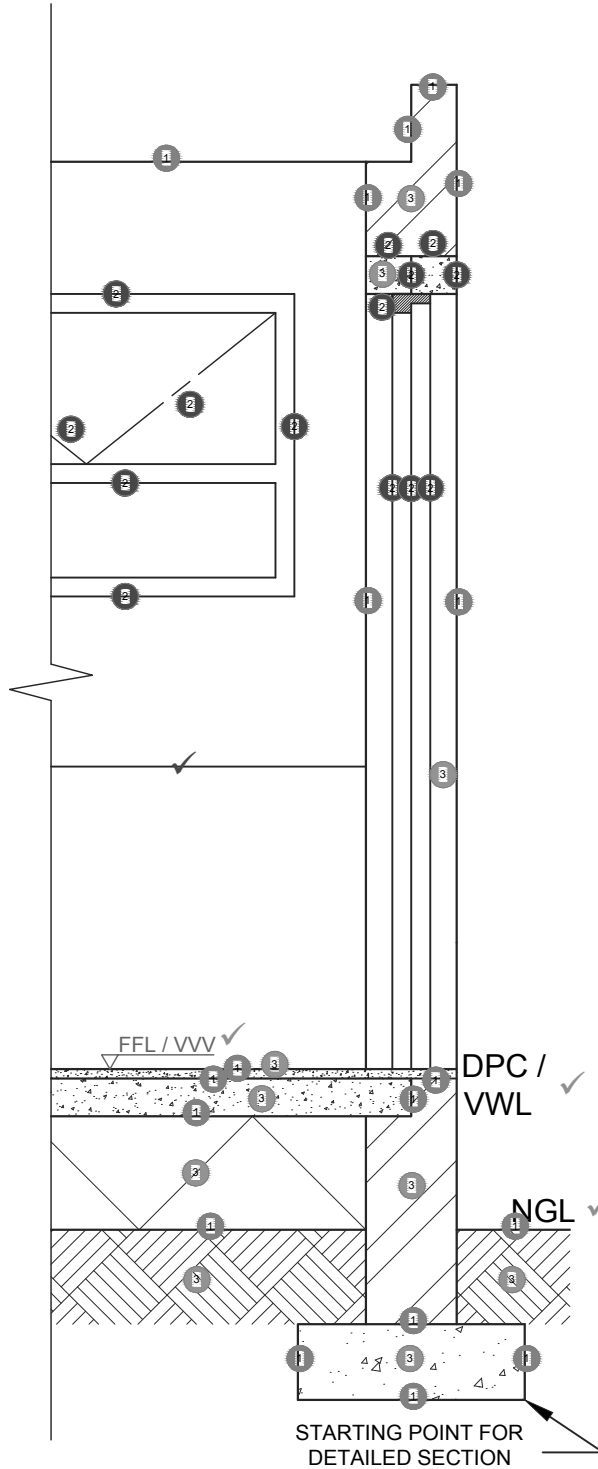
VRAAG 4	
ASSESSERINGS-KRITERIA	
VLOERPLAN	
1	DEURE + VENSTERS 20
2	TOE-BEHORE 9
3	ARSERING 3
4	BYSKRIFTE 6
SUBTOTAAL 38	



SUIDAANSIG SOUTH ELEVATION ✓
SKAAL 1 : 50 ✓

QUESTION 4		ASSESSMENT CRITERIA	
SOUTH ELEVATION			
1	WALLS + STEPS + FFL	5	(1)
2	WINDOW + DOOR + GARAGE DOOR	10	(2)
3	LABELS	4	✓
SUBTOTAL		19	

VRAAG 4		ASSESSERINGSKRITERIA	
SUIDAANSIG			
1	MURE + TRAP + VV	5	(1)
2	VENSTER + DEURE + MOTORHUISDEUR	10	(2)
3	BYSKRIFTE	4	✓
SUBTOTAAL		19	



GEDETAILLEERDE SNIT A-A
SKAAL 1 : 20

DETAILED SECTION A-A
SCALE 1 : 20

QUESTION 4		
ASSESSMENT CRITERIA		
DETAILED SECTION		
1	FOUNDATION + WALL + FLOOR	9
2	DOOR + LINTEL + WINDOW + KITCHEN CABINET	8
3	HATCHING	5
4	LABELS	3
SUBTOTAL		25

VRAAG 4		
ASSESSERINGSKRITERIA		
DEURSNEE-AANSIG		
1	FONDASIE + MUUR + VLOER	9
2	DEUR + LATEI + VENSTER + KOMBUISEKABINET	8
3	ARSERING	5
4	BYSKRIFTE	3
SUBTOTAAL		25