



basic education

Department:
Basic Education
REPUBLIC OF SOUTH AFRICA

NATIONAL SENIOR CERTIFICATE

GRADE 10

MUSIC P2

EXEMPLAR 2012

MEMORANDUM

MARKS: 30

This memorandum consists of 10 pages.

INSTRUCTIONS AND INFORMATION

1. This question paper consists of THREE sections.
2. Answer ALL the questions.
3. Write your answers on this question paper.
4. This examination will be written while candidates are listening to a CD.
5. The music teacher of the centre must conduct the examination in the presence of the invigilator.

INSTRUCTIONS TO THE PERSON OPERATING THE SOUND EQUIPMENT

1. The instructions for the music teacher appear in frames.
2. Each musical extract (track) must be played the number of times specified on the question paper. Allow adequate time between repeated tracks to allow candidates to write their answers before playing the next track.
3. The number of the track must be announced clearly each time before it is played.
4. A battery-powered CD player must be available in case of a power failure.

MARKING GRID

	QUESTION	TOTAL	MARKER	MODERATOR
SECTION A	1	4		
	2	3		
	3	3		
	SUBTOTAL	10		
SECTION B	4	8		
	5	6		
	6	3		
	7	3		
	SUBTOTAL	(20 ÷ 2) 10		
SECTION C	8	10		
	SUBTOTAL	10		
	GRAND TOTAL	30		

SECTION A: AURAL**QUESTION 1: RHYTHM AND TIME**

Read and study the questions for ONE minute.

Track 1 must be played FOUR times.


1.1 Listen to Track 1 and answer the questions.


1.1.1 Name the time signature.

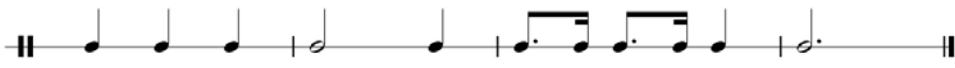
Answer: 3/4

(1)

1.1.2 Make a cross (X) in the appropriate block to indicate which rhythmic pattern is CORRECTLY notated.

(a)  ☐

(b)  ☒

(c)  ☐

(1)

Track 2 must be played THREE times.

1.2 Listen to Track 2 and fill in the missing note values at (a) on the music score.

(a)



Answer:



1 mark per beat = 2 marks

(2)
[4]

QUESTION 2: MELODIC AND RHYTHMIC DICTATION

Read and study the questions for ONE minute.

Track 3 must be played THREE times.

- 2.1 Listen to Track 3 and fill in the missing notes at *.



Answer:



1 mark per beat = 2 marks

(2)

- 2.2 Is the interval between middle C and the missing note at (a) a major third or a minor third?

Answer:

Major third

(1)

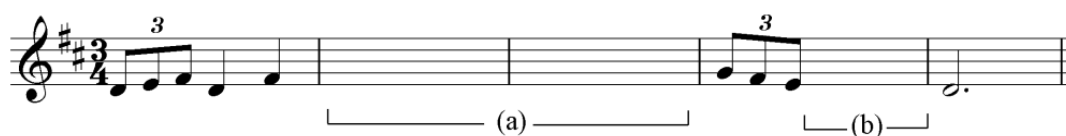
[3]

QUESTION 3: COMPOSITION TECHNIQUES

Read and study the questions for ONE minute.

Track 4 must be played THREE times.

Listen to Track 4 and answer the questions that follow.



Answer:



- 3.1 Name the compositional technique used in bars 2 and 3 at (a).

Answer:

Sequence

(1)

- 3.2 Name the compositional technique used in bar 4 at (b).

Answer:

Repetition

(1)

- 3.3 Name the cadence with which this extract ends.

Answer:

Perfect cadence

(1)

[3]

TOTAL SECTION A: 10

SECTION B: RECOGNITION**QUESTION 4: MUSICAL STYLES**

Read and study the question for ONE minute.

Tracks 5 to 12 must be played ONCE.

Listen to Tracks 5 to 12 and name the style or genre of each.

Answer:

- 4.1 Track 5: Boeremusiek
- 4.2 Track 6: Indian music
- 4.3 Track 7: Moppies and ghoemas
- 4.4 Track 8: Rock 'n' roll
- 4.5 Track 9: Pop
- 4.6 Track 10: Afrikaans music
- 4.7 Track 11: Military band
- 4.8 Track 12: South African indigenous music

[8]

QUESTION 5

Tracks 13 to 18 must be played ONCE.

Indicate whether the following statements are TRUE or FALSE. Circle the correct answer.

Answer:

- | | | | |
|-----|-----------|--|------------|
| 5.1 | Track 13: | The solo instrument playing in this extract is a trumpet. | |
| | | TRUE FALSE | (1) |
| 5.2 | Track 14: | A concertina is used in this work. | |
| | | TRUE FALSE | (1) |
| 5.3 | Track 15: | Drums and a rattle are used in this work. | |
| | | TRUE FALSE | (1) |
| 5.4 | Track 16: | In this extract you hear a clarinet. | |
| | | TRUE FALSE | (1) |
| 5.5 | Track 17 | The instrument heard in this extract is a tuba. | |
| | | TRUE FALSE | (1) |
| 5.6 | Track 18: | In this extract you hear an unpitched percussion instrument. | |
| | | TRUE FALSE | (1) |
| | | | [6] |

QUESTION 6

Track 19 must be played TWICE.

Listen to *Hound Dog* performed by Elvis Presley and comment on the form, instrumentation and melody.

Answer:

- | | | | |
|-----|------------------|---|-----|
| 6.1 | Form: | Strophic song based on the twelve-bar blues | |
| | | | (1) |
| 6.2 | Instrumentation: | <ul style="list-style-type: none"> • Elvis Presley is accompanied by a typical country blues band – a combination of guitar, bass and drums are used. • The slides on the guitar part are, perhaps, a mirror of Elvis's vocal style. • The backing singers provide a harmonic 'ooh'. | |
| | | | (1) |
| 6.3 | Melody: | <ul style="list-style-type: none"> • A narrow range (minor 6th). • The lowered 3rd gives a bluesy feel to the music. • Slight portamento (glissando) between notes. | |
| | | | (1) |

[3]

QUESTION 7

Answer EITHER QUESTION 7.1 OR QUESTION 7.2 OR QUESTION 7.3.

Tracks 20 to 22 must be played TWICE in succession.

- 7.1 Track 20: Listen to the work and circle THREE words, phrases or dates below that you associate with this work.

Answer:

Oratorio
Bach
Handel
Concerto Grosso
6/8 time
String quartet
1741
1841

(3)

OR

- 7.2 Track 21: Listen to the work and circle THREE words, phrases or dates below that you associate with this work.

Answer:

New Orleans
1923
Duple time
King Oliver
Scott Joplin
6/8 time
String quartet
1832

(3)

OR

- 7.3 Track 22: Listen to the work and circle THREE words, phrases or dates below that you associate with this work.

Answer:

Male voices
Drums and clapping
Duple time
Drums
Leg rattles
Funeral song
Girls' post-initiation song
Choral work

(3)

[3]

TOTAL SECTION B (20 ÷ 2): 10

SECTION C: FORM**QUESTION 8**

Track 23 must be played TWICE in succession.

Study the song *He Motswala* (electronic version) and answer the questions that follow.**He Motswala**

Traditional

SOPRANO

He mo-tswa - la, he mo-stwa - la, he mo-tswa - la, he mo-stwa

ALTO

A - li - we, a - li - we, a - li - we,

8

la, Ma-ngwa-ne oi-le pi - to-ri-ya pi - to-ri-ya tshi-pi si - pa-ne-re, si - pa-ne-re sa by -

a - li - we, pi - to-ri-ya, si - pa-ne-re, by -

14

-se-ke-le ka tem-pa ka-be ka sai - na, ka sai-na ka-be ka tem-pa, ka tem-pa ka-be ka sai - na.

se-ke-le, ka sai - na, ka tem - pa ka sai - na.

21

He mo-tswa - la, he mo-stwa - la, he mo-tswa - la, he mo-stwa - la,

A - li - we, a - li - we, a - li - we, a - li we, —

8.1 Name the key of this song.

Answer:

G major

(1)

8.2 What singing style is used in bars 1–8?

Answer:

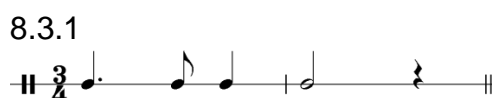
Call and response

(2)

8.3 Notate TWO prominent rhythmic motifs that appear in this song.



Answer:



(Any other relevant motif will be accepted.)

(2)

8.4 Analyse the form of this song by filling in the table below.

BAR NUMBER	DESCRIPTION/SECTION	KEY

Answer:

BAR NUMBER	DESCRIPTION/SECTION	KEY
1–8	A	G major
9–20	B	G major
21–29	A ¹	G major

(9 ÷ 3) (3)

8.5 Name the form of the work.

Answer:

Ternary form

(2)

TOTAL SECTION C: 10
GRAND TOTAL: 30