



**CHIEF DIRECTORATE: EXAMINATIONS AND ASSESSMENT**

Steve Vukile Tshwete Complex, Zone 6 Zwelitsha, 5608, Private Bag X0032, Bhisho, 5605 REPUBLIC OF SOUTH AFRICA:

Enquiries: **Mrs F. Ntsangani** Tel: 040 602 7099 . Fax : 040 602 7295. E-mail: [fezeka.ntsangani@ecdoe.gov.za](mailto:fezeka.ntsangani@ecdoe.gov.za)

Website: [www.ecdoe.gov.za](http://www.ecdoe.gov.za)

Ref. no. 13/P Tel.: (040) 602 7099/082 888 5419  
Enquire: Mrs F. Ntsangani Fax: 040 602 7295

**TO: DISTRICTS HEADS OF EXAMINATIONS  
PRINCIPALS OF SCHOOLS IN THE FET BAND**

**FROM: (A) CES: ASSESSMENT INSTRUMENT DEVELOPMENT AND ITEM  
BANK MANAGEMENT  
MRS F. NTSANGANI**

**SUBJECT: ERRATA – AGRICULTURAL SCIENCES P2  
GRADE 12 PREPARATORY EXAMS**

**DATE: 12 SEPTEMBER 2022**

Agricultural Sciences P2 was written on Tuesday, 6 September 2022. We were made aware of certain errors, amendments and omissions that were discovered during the marking process.

In order to address this and to ensure that the learners are not disadvantaged, the following standardised approach to marking must be adopted across the Province. The following guidelines with regard to marking was prepared in conjunction with the examiner and moderator.

**ERRATA: AGRICULTURAL SCIENCES P2 (MARKING GUIDELINE)**

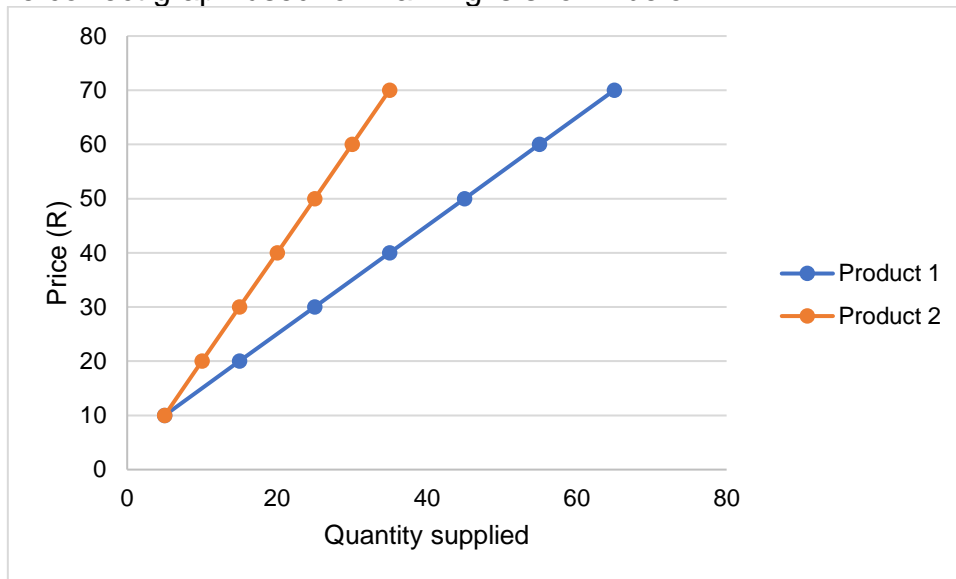
**QUESTION 1**

1.1.1 Error - No answer: Do not mark question minus (2)

**Total for Q1.1 (9 x 2) = 18**

### 2.2.1 Graph was incorrect

The correct graph used for marking is shown below



#### Checklist

- Correct heading ✓
- x-axis correctly calibrated with label (Quantity supplied) ✓
- y-axis correctly calibrated with label (Price) ✓
- Graph type (Line graph) ✓
- Correct units (R) ✓
- Accuracy ✓

2.3.2 (a) Not in CAPS – Advantages of Marketing System A (controlled marketing) are not supposed to be taught minus (1)

2.3.3 Not in CAPS – Advantages of Marketing System A (controlled marketing) are not supposed to be taught minus (2)

3.2.3 Not in CAPS – Importance of a labour contract not to be taught minus (2)

TOTAL MARKS NOT COUNTED = 7 marks

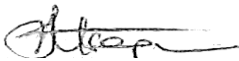
TOTAL for the paper: 143

**CONVERSION OF MARK TO 150:  $\frac{\text{Learner mark}}{143} \times 150 = \text{Final Mark P2}$**

Example: Learner obtains 120 out of 143  
Final mark:  $120/143 \times 150 = 125,8 = 126$

We request that this must be brought to the attention of all educators marking this paper and sincerely apologise for the inconvenience.

Yours in quality education.

  
Mrs F. Ntsangani

12 SEPTEMBER 2022  
DATE